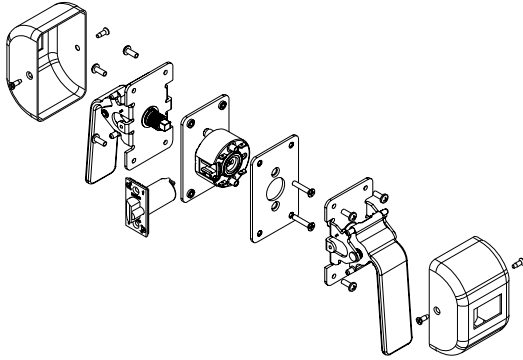
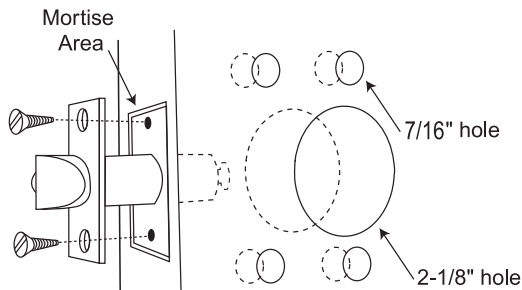


# 1PD Push/Pull Cylindrical Cartridge Lockset Installation Instructions®



## 1 DOOR PREPARATION

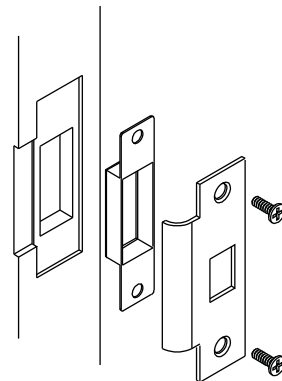
1. Prepare door according to engineering template supplied.



2. Insert latch and fasten with two screws.

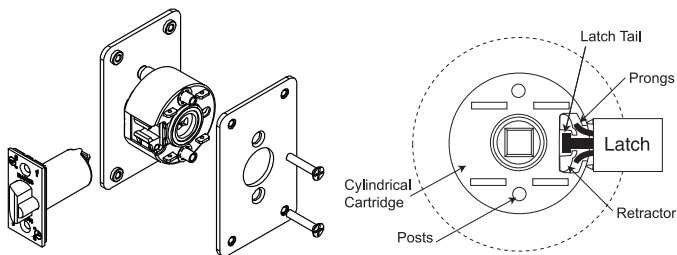
**NOTE: It is important that both 1" and 2-1/8" holes be on the same horizontal center line.**

## 2 INSTALL STRIKE



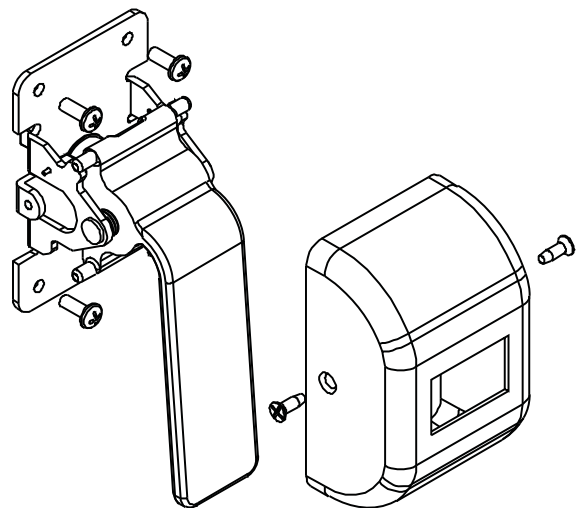
1. Align strike with latch.
2. Trace strike outline on door jamb.
3. Mortise jamb and install strike and dust box.

## 3 CYLINDRICAL CARTRIDGE AND LATCH ENGAGEMENT



1. Push outside mounting plate assembly with cartridge through 2-1/8" diameter hole from outside of door. Make sure that retractor is properly engaged with latch as shown above.
2. Install inside mounting plate and secure with two thru-bolt mounting screws.
3. Align cam in push/pull assemblies for maximum spindle rotation when in contact with handle finger. With proper orientation, attach push/pull assemblies to mounting plate already on door and secure with four screws. Make sure that spindle is engaged with cartridge.
4. Check handles for proper operation before closing door.

## 4 COVER PLATE ASSEMBLY



Assemble cover plates on inside and outside push/pull assemblies. Secure with two screws.

## 1PD Push/Pull Cylindrical Cartridge Lockset Installation Instructions<sup>®</sup>

### HOW TO CONVERT HANDLES FROM PUSH TO PULL:

1. Remove retaining ring.
2. Remove shaft.
3. Remove handle and rotate 180°. **BEFORE REASSEMBLY: DO NOT REMOVE SPRING FROM MOUNTING PLATE.**
4. Rotate cam with spindle assembly 180° before placing handle back into mounting plate.
5. Align all holes including spring and insert shaft back and secure with retaining ring.

**BE SURE TO CHECK EACH HANDLE FOR PROPER OPERATION BEFORE INSTALLING ON DOOR.**

